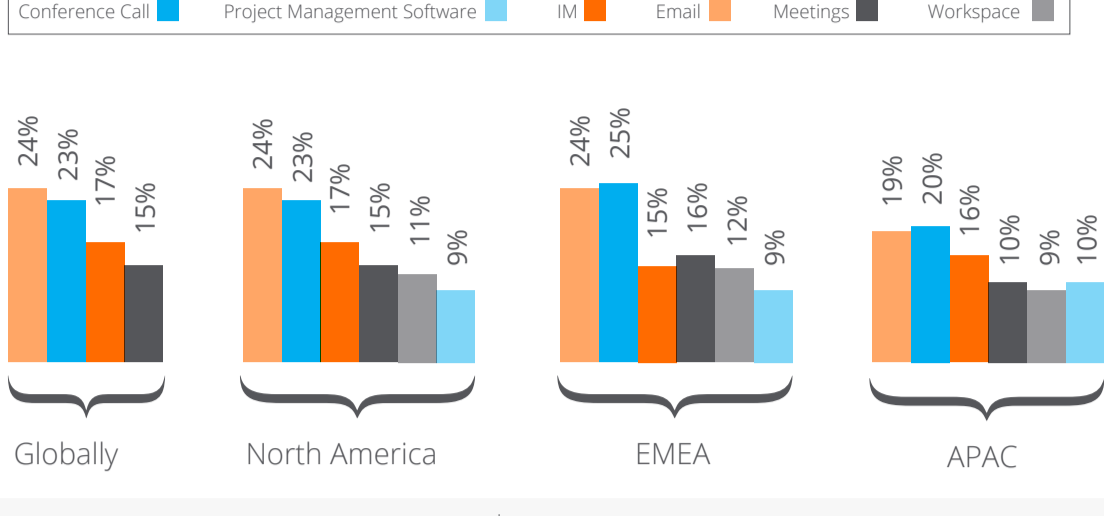


As technology gets better and collaboration becomes a global mainstay of workplace practice, our world gets just a bit smaller as we interact with colleagues from different cultures in regions all across the world. PGI recently conducted a global survey to get a better understanding of how work habits, technology preferences, office etiquette and business-related social norms differ around the world as a result of cultural differences.

Collaboration Around the Globe

Preferred Collaboration Tools

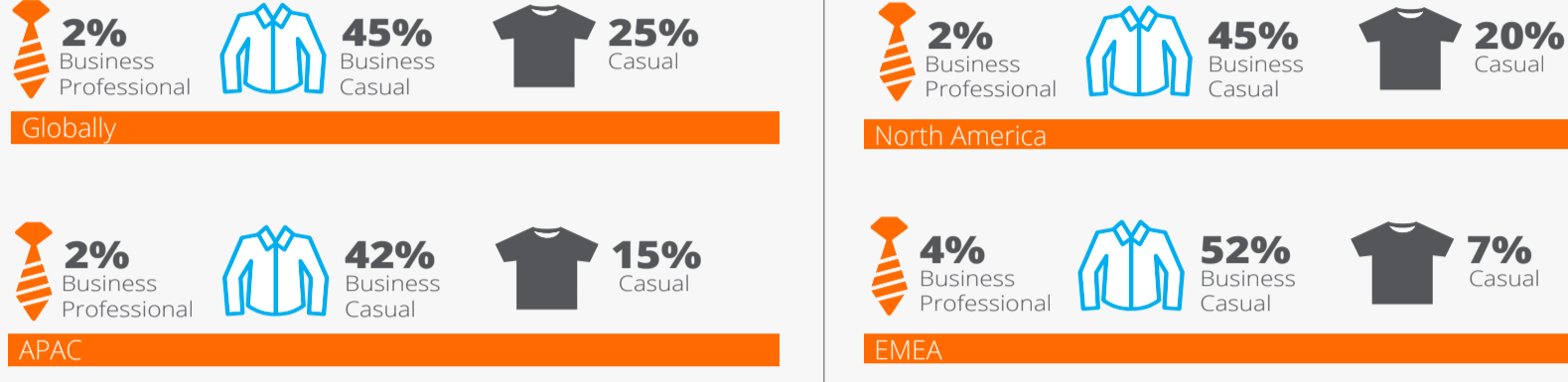


Workplace trends by region are not as different as they might have been in the past. Collaboration tools have contributed to a global, mobile workplace where productivity and efficiency rule.

Suit and Tie Optional

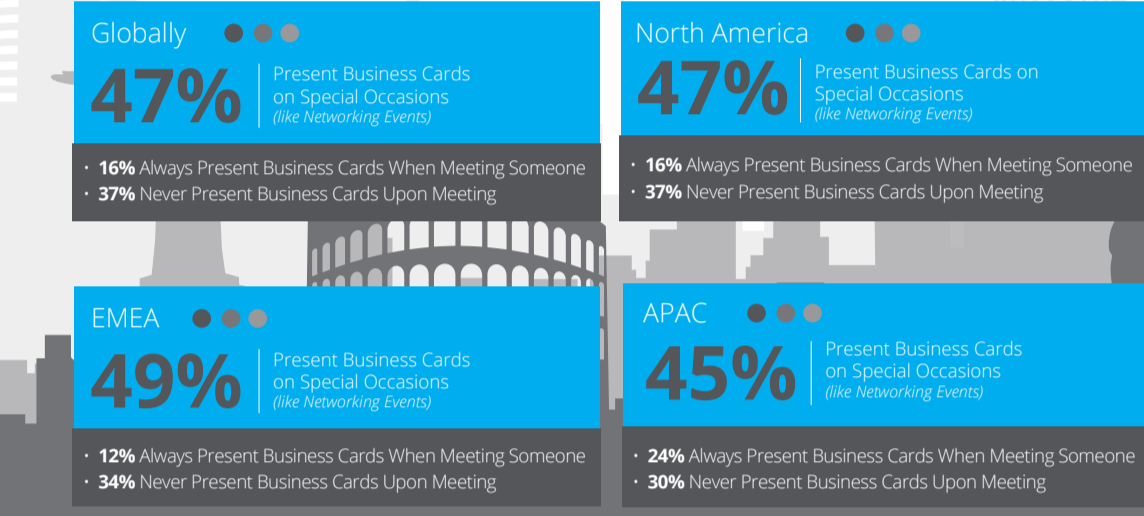
According to survey data, the days of the suit seem to be numbered and dress codes in offices around the world are increasingly more relaxed.

Office Dress Code



The Business Card is Dead

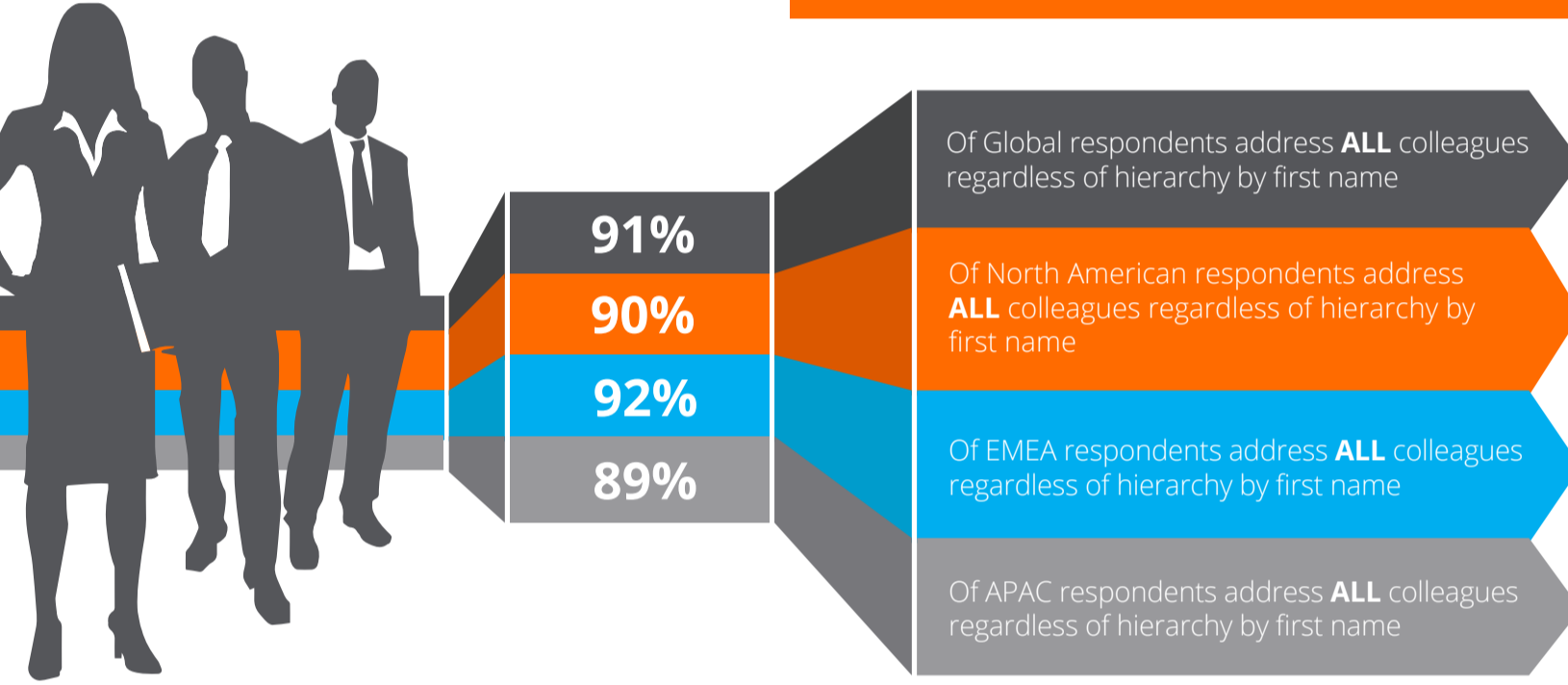
Only 16 percent of global respondents still present business cards when meeting new contacts. However, when we asked respondents about mishaps encountered on business trips due to cultural differences, many noted that in some areas of APAC — Japan in particular — presenting business cards in order of hierarchy at the start of a meeting is a respected tradition. Visitors should educate themselves on how to avoid cultural business faux pas.



Everyone's on a First-Name Basis

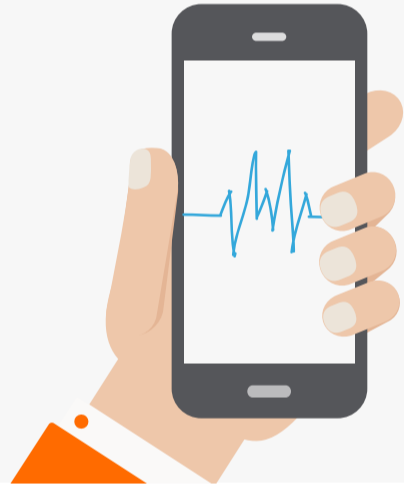
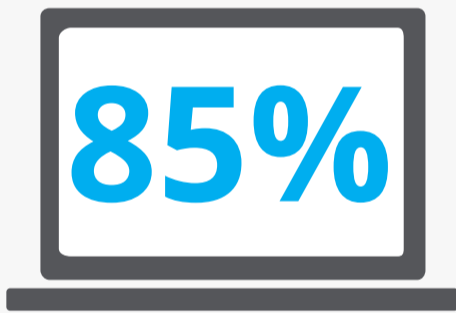
How Workers Around the Globe Address Colleagues

Gone are the days of the formal address. From CEO to associate, it would seem that most of us are on a first-name basis, with 90% of respondents referring to peers and superiors by their first name.



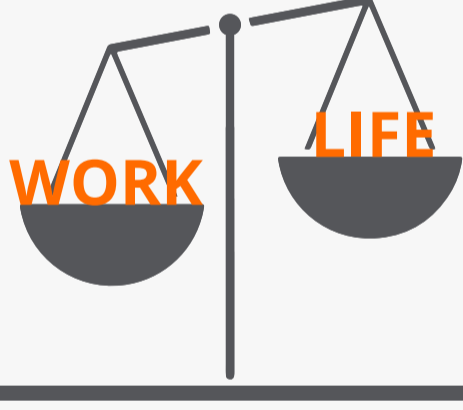
We Live For Our Devices

According to survey data, we can't seem to separate ourselves from our devices.



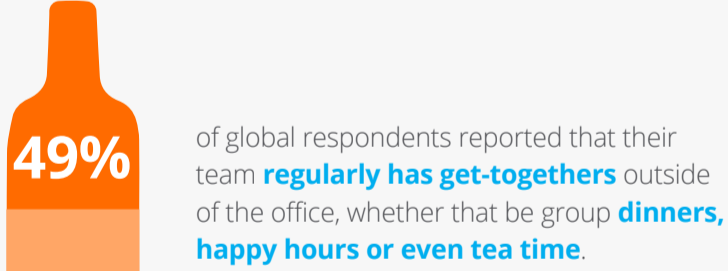
Work-Life Balance is Improving

We often hear people complain about a lack of work-life balance, and there are undoubtedly many out there who are still aggressively overworked. However, we were pleased to discover that many employees are able to leave their work at the office at the end of the day.



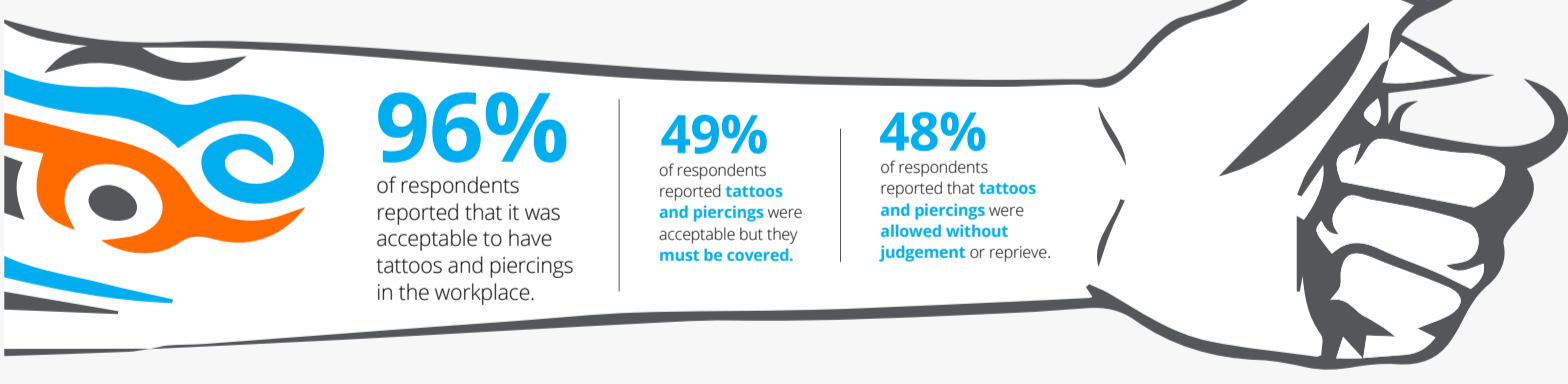
Team Bonding is Essential

Your relationships with colleagues are important, and nurturing those relationships is an essential part of contributing to a positive work culture.



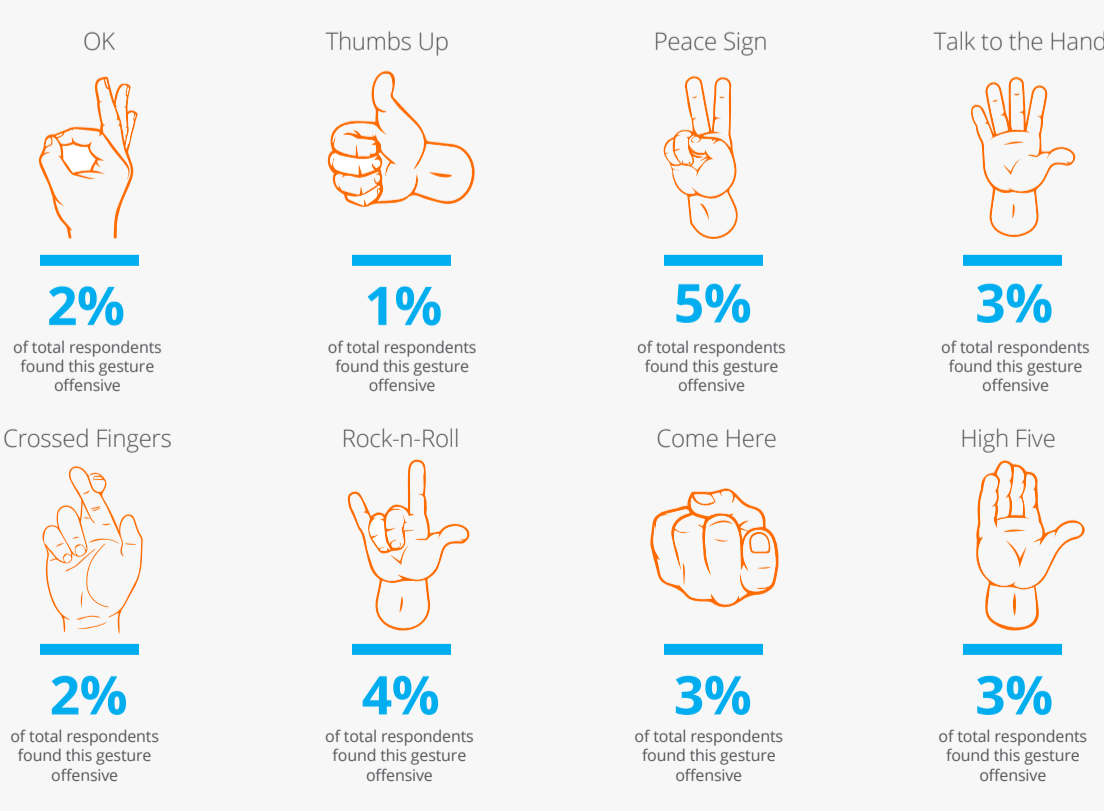
Tat it Up

Have a tattoo or piercing? No problem. The majority of people globally believe it is socially acceptable to have a tattoo or piercing in the workplace.



Mind Your Gestures

Many of us gesture with our hands when we speak, but if you are traveling for business to other countries, you may want to proceed with caution. There are many hand gestures and signals that may seem harmless in one country but would be perceived as highly offensive in another culture.



"I experienced a cultural faux pas when I made a thumbs up gesture with a person from the Middle East." - North American Respondent

"We were doing business with a group from China. They wanted tea served constantly throughout the meeting and would dismiss you with the back of their hand when they didn't want any, which is considered very rude in the U.S." - North American Respondent

"Western [colleagues] coming into the Middle East have little to no idea about the do's and don'ts of working here. In most places (in the Middle East), use of the left hand during a presentation is considered inappropriate and, at times, even rude." - Middle Eastern Respondent

About the Survey:

Based on our findings, we believe that technology and collaboration tools can help break down cultural barriers and unify people across different regions and cultures. This is evidenced by the work habits and business etiquette that exist across the board and dictate how we do business, both with people of our own culture and from other cultures as well. On a social and cultural level, these results also indicate a more relaxed attitude in the workplace.

As dress codes ease up and surnames get dropped, we feel a bit more comfortable and can get our work done without being bogged down or constrained by old-fashioned customs and traditions. The workplace of today is increasingly a more open-minded place, accepting of cultural nuances and defined by an agreeableness that is evident in these survey results.